

15 AIRBRIDGECARGO



We love
to make it happen.

abc | pharma 

For your healthcare shipments



IOSA Registered Operator





We love being part of your mission to heal.



At AirBridgeCargo, we understand your mission to help people live longer, happier and healthier lives. We are experts when it comes to **transporting temperature-sensitive pharmaceuticals and life-saving medical equipment** across the globe. From vaccines, laboratory equipment, MRI machines to blood samples and beyond.

AirBridgeCargo is your partner with an in-depth knowledge of the healthcare and pharmaceutical industry. When a cool chain has to span across continents, you can count on our cargo experts and modern freighter fleet to make it happen. **Always. Worldwide.**

Logistic solutions based on *your needs*

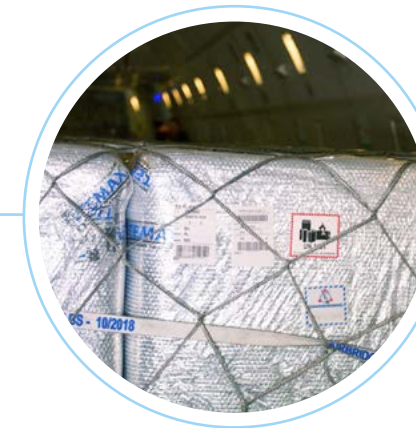
- Dedicated, highly skilled staff trained in handling healthcare products
- Boeing 747-8 and 747-400 with three compartments enabling different temperature settings from 4°C to 29°C
- Full compliance with IATA TCR and CEIV Pharma
- Exact temperature monitoring from acceptance to delivery
- Special packaging solutions and thermal blankets for palletized shipments
- Customer service support, online track&trace option for all shipments
- High-tech hub at Moscow Sheremetyevo International Airport with effective connections to deliver cargo worldwide
- Tailor-made logistics solutions based on your individual requirements
- QEP Envirotainer accredited network of ABC stations
- Adoption of the latest digital technologies (Sky Fresh for data collecting, temperature data loggers to monitor ambient environment, etc)
- Sophisticated, cohesive and forward-thinking approach based on peer learning and networking through industry-related initiatives - Pharma Aero, Pharma Gateway Amsterdam (PGA) and others



AirBridgeCargo operates one of the youngest freighter fleets in the air cargo industry, consisting of state-of-the-art Boeing aircraft.

Our freighter fleet offers pharma customers multiple benefits

- Three independently selectable temperature zones
- Selectable target temperature range from 4°C to 29°C for each cargo compartment
- Independent temperature control between main deck, FWD lower deck and AFT lower deck
- Fast temperature pull down times after takeoff
- 'GoGreen' strategy – low levels of CO2 emissions
- State-of-the-art widebody aircraft in the air cargo industry
- Most suitable positions for temperature-sensitive cargo transportation based on temperature mapping of both aircraft types



Our Moscow hub that redefines *what's possible*

AirBridgeCargo's Moscow hub at Sheremetyevo airport features brand new equipment in each warehouse, allowing for an efficient and seamless handling of healthcare goods.

Thanks to our hub, we can offer the following benefits

- 70,300m2 of total warehouse space at 2 GHA's warehouses
- Warehouse with dedicated storage area for pharmaceutical products
- Enhanced security measures with 24/7 surveillance
- First automated cargo handling system in Russia with 3D cargo handling on several levels
- 99,98% safety index, TAPA certified



You like knowing you're in qualified hands.

Our abc pharma product was developed to offer customers the best possible logistics solutions in the air cargo industry and to **deliver healthcare cargo shipments** anywhere they need to be. AirBridgeCargo takes great pride in an individualized approach to customer service, allowing us to offer innovative cargo practices tailored to the specific needs of each customer. More than just offering a safe and reliable transportation of healthcare shipments, **we are continuously working on improving our services and keeping up with the demands of one of the fastest-growing industries in the entire world.** Ultimately, it is our goal to not only meet but exceed the expectations of our customers.

AirBridgeCargo utilizes the following containers to offer optimal *healthcare cargo solutions*:

HEAT AND COOL CONTAINERS



SONOCO THERMOSAFE PHARMAPORT® 360
Precise 5°C Temperature Control



ENVIROTAINER E1 (RKN)
0°C/+25°C



ENVIROTAINER E2 (RAP)
-20°C / 20 °C



C-SAFE (RKN)
+4°C/+25°C



C-SAFE (RAP)
+4°C/+25°C



DOKASCH (RKN)
+2°C/+30C



DOKASCH (RAP)
+2°C/+30C

REFRIGERATED CONTAINERS



ENVIROTAINER T2 (RKN)
Refrigerated container
-20°C/+20°C



ENVIROTAINER T2 (RAP)
Refrigerated container
-20°C/+20°C

PASSIVE CONTAINERS



VA-Q-TAINER (XLX, TWINX)
Passive container
-70°C/+25°C



SKYCELL (2500C, 2500CRT, 1500C, 1500CRT, 770C, 770CRT)
Passive container
+2°C/+25°C

AirBridgeCargo offers different types of comprehensive solutions for temperature-sensitive cargo, using active and passive containers.

Specialized services for healthcare shipments

ABC PHARMA ACTIVE is a solution for time and temperature sensitive pharmaceutical products that need to be shipped in active containers. A variety of containers is used to keep healthcare goods as protected as possible, including dry ice technologies. Goods shipped are kept at a constant temperature throughout the entire cargo journey. Use of active containers mitigates risks for ambient temperature influence on healthcare products.



ABC PHARMA PASSIVE is the solution for prepackaged pharmaceutical products. Within required temperature ranges and by seasonal consideration of routes, healthcare goods are shipped efficiently and effectively.

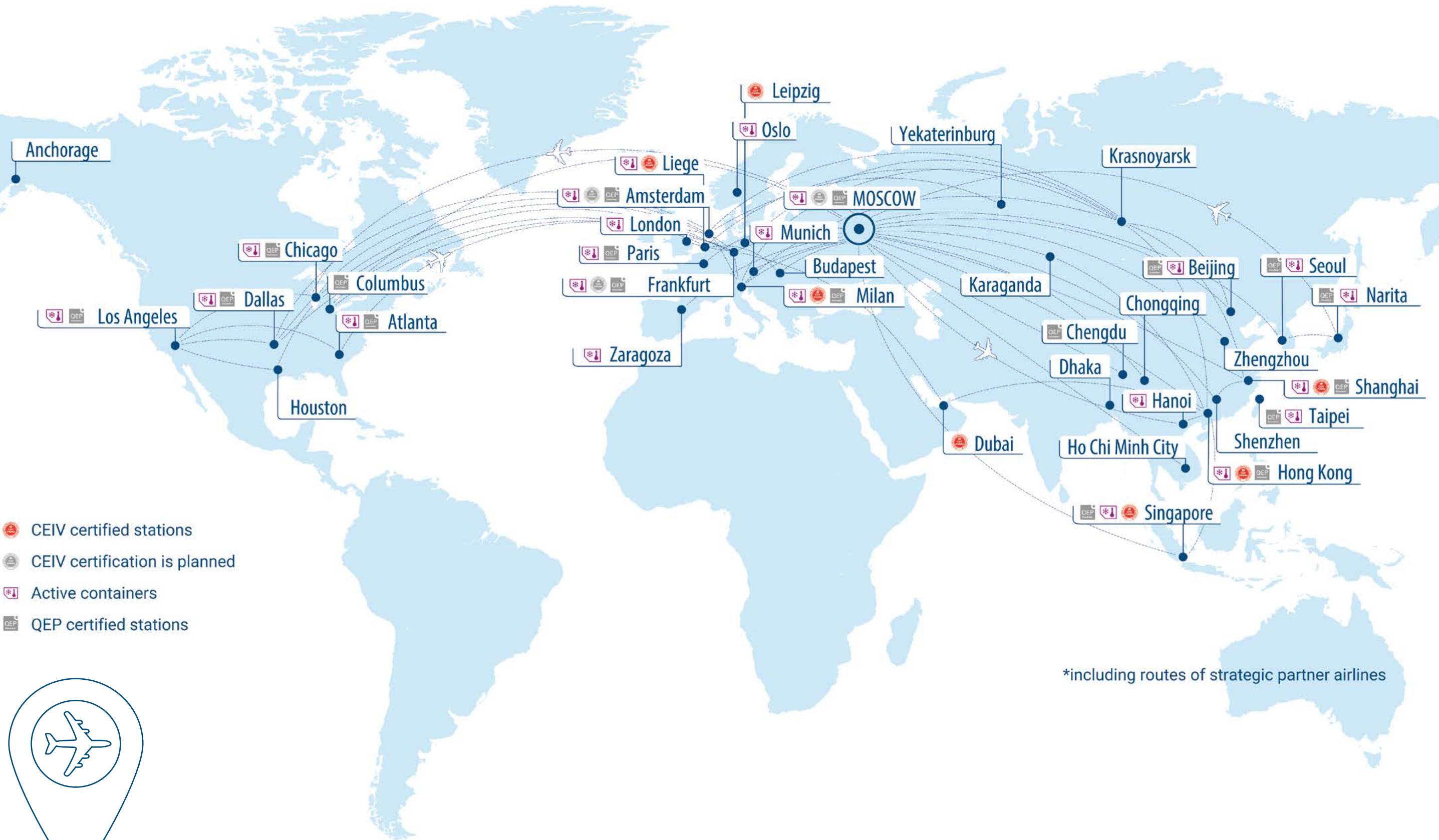
SPECIFICATIONS	abc PHARMA ACTIVE	abc PHARMA PASSIVE
Active Control Containers*	+	-
B747-400 / B747-8 with 3 independently controlled temperature zones	+	+
High priority for booking and cargo loading	+	+
Thermal blankets	-	On request
SOP with Customers**	On request	On request
Special supervision	+	On request
Temperature monitoring during freight transportation chain	+	On request
Dedicated and qualified airline personnel	+	+
Route network	Active containers approved	On request

* - Envirotainer containers + cSafe containers + Dokasch containers
** -Standard Operational Procedures

Additional services are available on request, please contact pharma@airbridgecargo.com



You like knowing you're on the route to success.



*including routes of strategic partner airlines



#network #worldwide

11 in Europe and the Middle East 4 in Russia and CIS 14 in Asia 6 in the USA



A partner you can trust in.

AirBridgeCargo is the leading all-cargo carrier in Russia that operates among the top ten international cargo airlines worldwide.

Quality focus

- IATA and IOSA certified, full compliance with all international/internal safety guidelines and quality standards (Cargo IQ)
- Member of Cool Chain Association
- IATA CEIV (pharma) and QEP certified stations
- Qualified and certified team of logistics practitioners for transportation of general and special cargoes
- 24/7/365 Control Tower (CT) operation to monitor and manage transportation of special cargo consignments



Special attention for special cargo

CONTROL TOWER

AirBridgeCargo Airlines has established a new 24/7/365 Control Tower (CT) operation to monitor consignments of special cargoes and to proactively respond to service disruptions to ensure it consistently meets customers' delivery deadlines. Managed by a team of fully trained supply chain specialists and based in Moscow, HQ the Control Tower provides:

- real-time, round-the-clock monitoring of all cargo movements throughout the entire transportation process across ABC's network
- checkup of ABC's fleet technical condition (temperature control system, cargo handling system readiness)
- schedule alignment and control for priority delivery of special cargo
- communication with ABC specialists from different departments and customers in case of deviations for prompt response
- cargo status updates and reports
- CT personnel availability 24/7 via e-mail, skype or direct phone line



Achievements and advantages

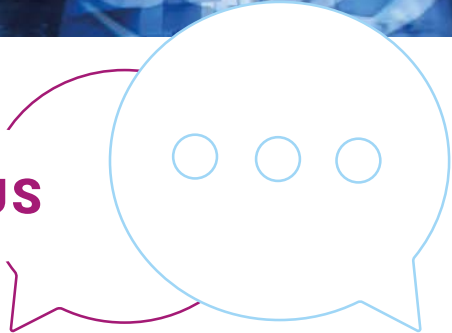
- More than 15 years of consecutive growth
- Over 30 airfreight destinations with effective connectivity options through hub in Moscow and 48 hour delivery time
- 1,300 cargo professionals worldwide
- Customized logistics solutions for transportation of general and special cargo
- State-of-the-art Boeing 747 fleet
- Logistics solutions, complemented by the extensive network of ABC interline partners and trucking companies worldwide





Your personal notes

GET IN TOUCH WITH US



Yulia Celetaria
Global Director, Pharma

T: +49 6924 7579 760
T: +49 173 217 4264

yulia.celetaria@airbridgecargo.com
pharma@airbridgecargo.com

www.airbridgecargo.com

#modernfleet #worldwide #abcTeam #abcpharma #abcproducts #abcservices #airbridgecargo



www.airbridgecargo.com

