

**AIRBRIDGECARGO**



We love  
**to make it happen.**

**abc | care** 

 Member

IOSA Registered Operator

**CARGO IQ** 



**For live animals**



## Extra care that isn't extra.

**Animals** are more than just another shipment to us. Whether we have cattle or race horses as our guests on board, we make sure they enjoy their time in the air and fly in the best possible conditions. At ABC, we truly care. **Always. Worldwide.**

### Expertise

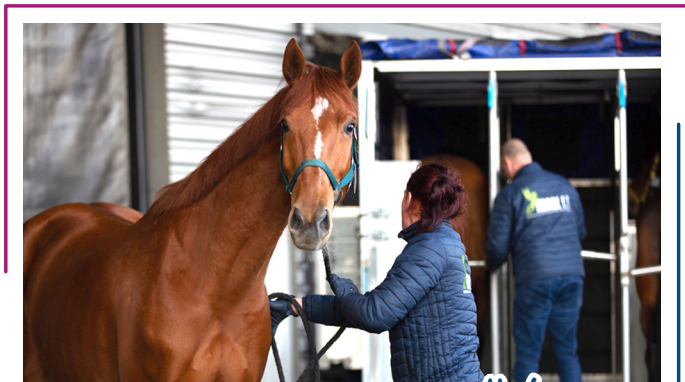
- More than 15 years of experience of carrying live animals and wild animals listed in CITES
- Full compliance with IATA LAR and EC 01/2005
- Certified and trained personnel across entire ABC network and live animal advisor specialists
- Highest priority during booking and cargo loading with shortest possible transit times
- Cooperation with local authorities for seamless handling processes
- Possibility to rent special containers and stalls
- In-house live animals transportation training

### We also offer

- Possibility of cargo attendants/grooms on board
- Special handling facilities at majority of ABC GHAs
- Independently controlled temperature zones
- Handling and transport processes customized to an animal
- Assistance with the documentation and IATA LAR & EC 01/2005 requirements
- Possibility to organize charter flight using combined fleet of ramp and non-ramp aircraft
- Online Track & Trace

### Special solutions for transportation of horses and deer

For common destinations, we are able to provide state-of-the-art facilities including **collapsible and fixed horse stables** (approved by EASA, FAA), which guarantee: easy animal-friendly access and possibility for caretaking during transportation, comfortable conditions (hay/water area, rubber floor, watertight base), strong and reliable construction.



#abccare

### Aircraft features

- Each cargo compartment can be **temperature controlled**, with temperature settings between +4°C and +29°C
- **Environmental control system** to reduce the humidity, control pressure, set four independently controlled temperatures in cargo compartments commodities to maintain the safety of the animal
- We are capable of operating **B747 as well as B777**

## Extra care that isn't extra

Whether it comes to choosing the right transportation method to import or export permits, quarantine regulations or veterinary health inspections and beyond, **we are happy to guide and find the best solutions for you.**

GET IN TOUCH WITH US



[live.animals@airbridgecargo.com](mailto:live.animals@airbridgecargo.com)

Steven Frederix | Live Animal Transportation Manager, Europe  
+32 495 200 610 | [Steven.Frederix@airbridgecargo.com](mailto:Steven.Frederix@airbridgecargo.com)

